



Florida Department of Transportation

RON DESANTIS
GOVERNOR

2198 Edison Avenue
Jacksonville, FL 32204

JARED W. PERDUE, P.E.
SECRETARY

For Immediate Release

Oct. 27, 2023

Contact: Samantha Rambeau

(904) 377-1850 | samantha.rambeau@dot.state.fl.us

FDOT to Host Public Meeting for Proposed Changes to Median on Blanding Boulevard South of Knight Boxx Road

JACKSONVILLE, Fla. – FDOT will hold a public meeting Thursday, Nov. 2 from 4:30 to 6 p.m. to discuss proposed median modifications on Blanding Boulevard south of Knight Boxx Road in Clay County.

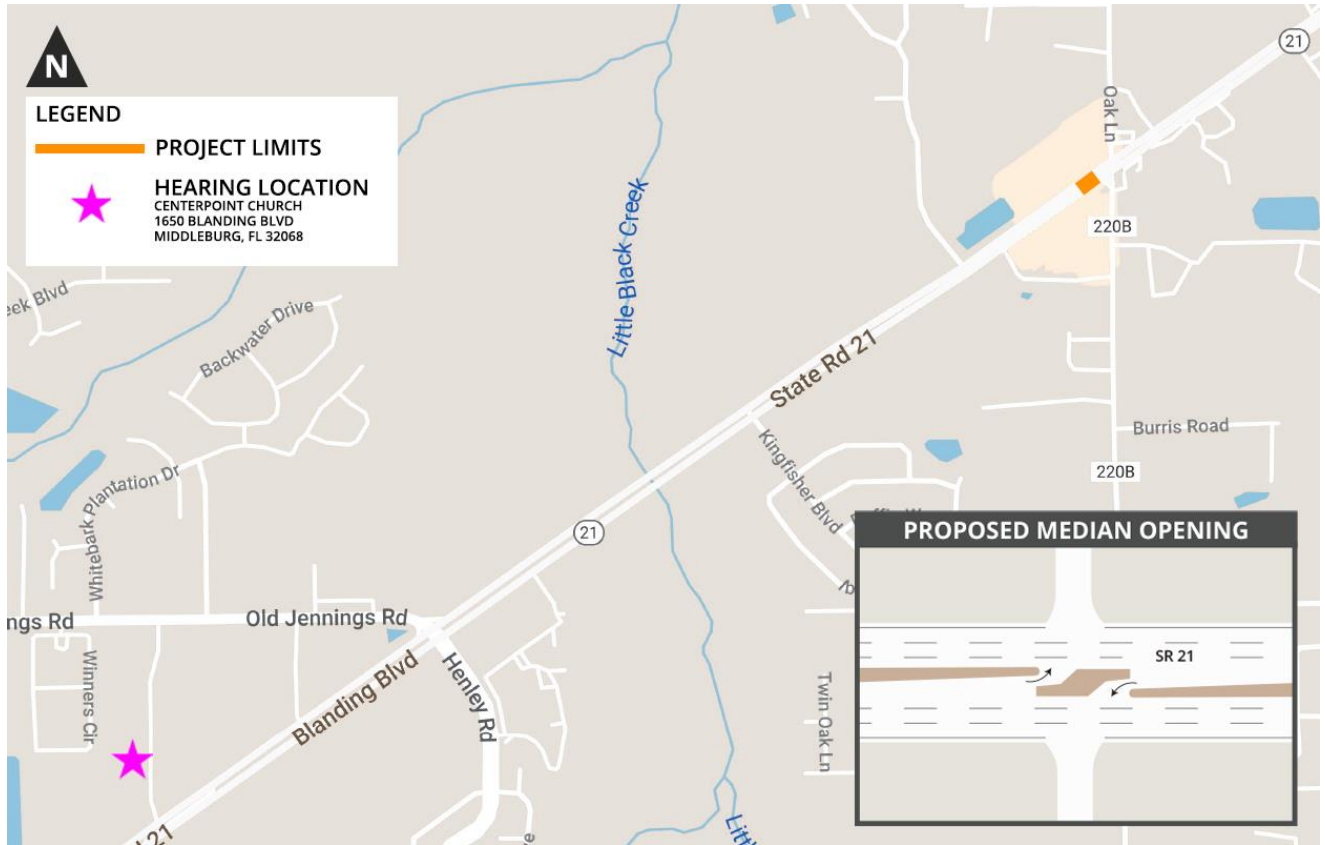
Proposed improvements include converting the existing full median opening in front of the Clay Shopping Plaza into a directional median, eliminating through access for drivers entering and exiting both northbound and southbound shopping plazas.

This project was designed to reduce crashes for traffic entering and exiting the median and help improve safety along the corridor.

The meeting will take place virtually and in-person at **Center Point Church** located at **1650 Blanding Boulevard, Middleburg, FL 32068**. FDOT staff and consultants will be available from 4:30 to 6 p.m. to answer questions and accept comments. A formal hearing and public comment period will begin at 6 p.m.

Project documents and virtual participation instructions are available at **nflroads.com/VPH**. Participants who are unable to attend the webinar virtually or in-person may listen to the meeting by phone at **(914) 614-3221** and entering access code **517-724-347**. All participants, regardless of the platform they choose, will be able to view project documents, ask questions and make comments for the public record.

Stay informed about lane closures and roadwork in your area by following FDOT District 2 at [@MyFDOT_NEFL](https://twitter.com/MyFDOT_NEFL) on Twitter, at [MyFDOTNEFL](https://www.facebook.com/MyFDOTNEFL) on Facebook or by visiting nflroads.com. Drivers seeking real-time traffic alerts may visit www.FL511.com or download the FL511 app.



###